

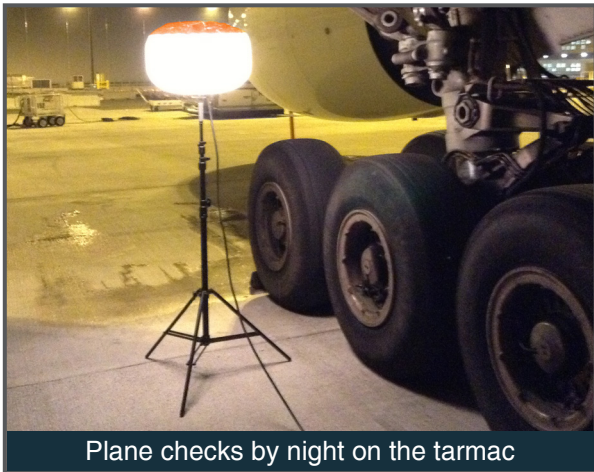


SELF-INFLATING LIGHTING BALLOON

Sirocco 2-S 150W HI-CR



Night-time road work on bridge joints



Plane checks by night on the tarmac



Maintenance operation inside a nuclear plant

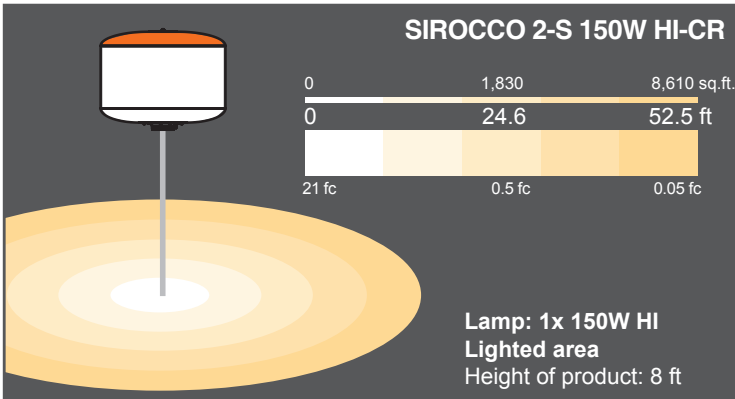
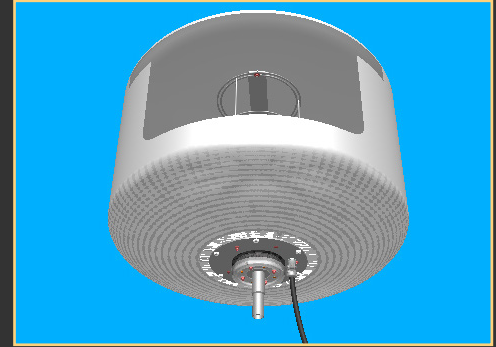
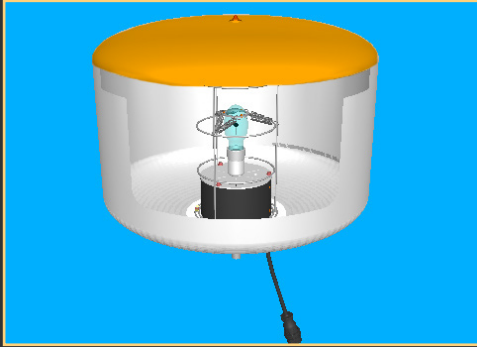


PORTABLE
& MULTIPURPOSE

REINFORCED
STRUCTURE

EXCELLENT
SIZE-PERFORMANCE
RATIO





MEASUREMENTS

Lamps	1x 150W HI EP
Average lamps life*	12 000 hours
Efficiency	87 lm/W
Type of lamp socket	E27 or E26 Medium Base
Maximum power	170 W
Available voltages	100 ~ 120 v or 220 ~ 240 v / 50 ~ 60 Hz
Ballast	1x 150w - integrated for increased mobility
Restrike time	~ 7 minutes
Main power supply or battery + converter or 1kVA generator	

* Under normal conditions of use

LIGHTING DATA

Open core area lighting requirement	3400 sq.ft.
Very low risk area lighting requirement for safety and security	1,830 sq.ft.
Light under the balloon (height: 8ft)	21 fc
Maximum lumen	13,300 lm
Color temperature: NEUTRAL	(3,500K-4,500K)

ENVELOPE SPECIFICATIONS

Diameter	2 ft
Height	1.5 ft

SAFETY FEATURES

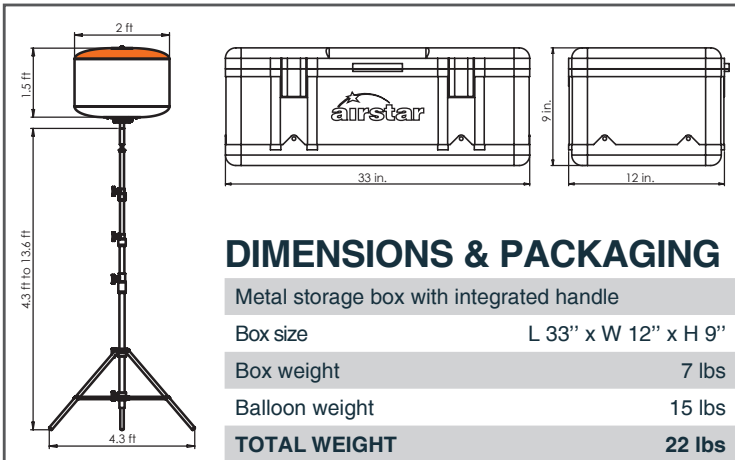
Flame-retardant fabric	
Silver reflector to improve lighting output and avoid light pollution	
Rain and dust proof envelope fabric	IP54
Maximum ambient temperature	115°F
Integrated temperature sensor	
Wind resistance	60 mph

PACKAGE INCLUDES

Light assembly, lamp (1), envelope with reflector, patch kit, manual, glove and metal box.

OPTIONAL ACCESSORIES

P400TA - 13-ft height telescopic stand
Tilt mount
Hitch mount
12v 300W converter
Sandbags (capacity: 35 lbs - shipped empty)
Multiple envelope color & reflector options



OPTIONAL ACCESSORIES

P400TA Tripod stand
Max. height: 13.5 ft
Min. height: 4 ft
Weight: 13 lbs
Footprint: 4 ft

Tilt mount

Hitch mount

12v 300W converter

Sandbag (capacity: 35 lbs)